

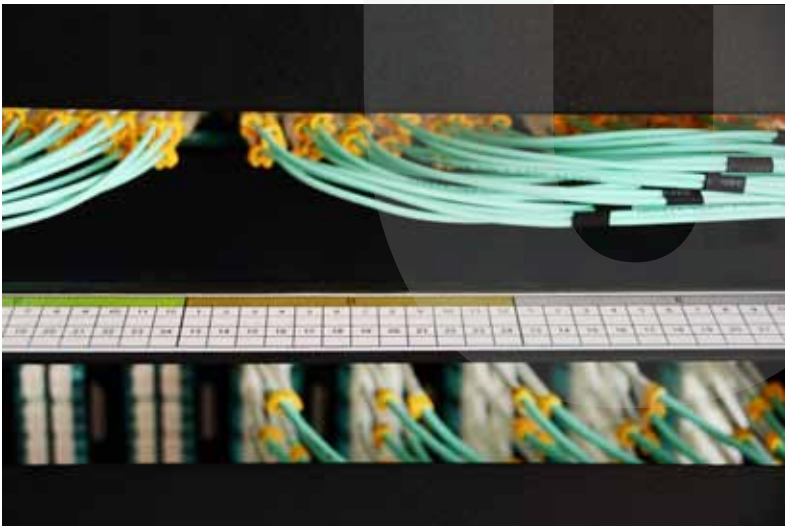


MX SERIES

SCALABLE **NETWORKING.**

▶ **PRODUCT GUIDE**





DATA CENTER FIBRE INFRASTRUCTURE

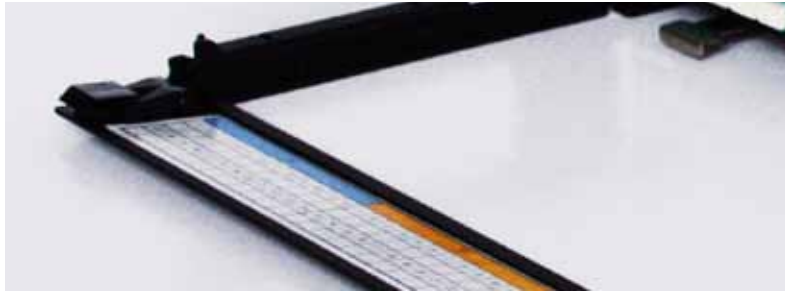


- Greater Network Flexibility** for changes
- Higher Port Density** across the network
- Ultimate Performance** guaranteed
- Enabled For Upgrades** to higher data rates



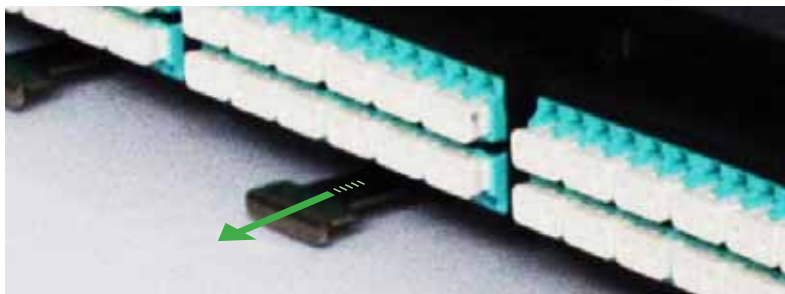
THE MX 1U PANEL





▶ **Port Labelling: Clear Designation**

Clear and easy to access label strip located on front management.



▶ **Single Module Release: Reduce Disruption**

Avoid moving multiple modules and disrupting patching unnecessarily.



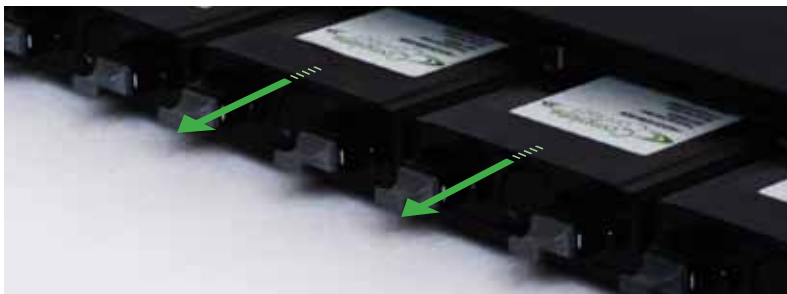
▶ **Patch Cord Routing Guides**

Maintain optical performance through maintaining the correct bend radius of patch cords.



▶ **Integrated Strain Relief**

Multiple trunk cable tie off positions with cable ties included.



▶ **Unique Front and Rear Loading Mechanism**

Improve installations with easy front and rear access.





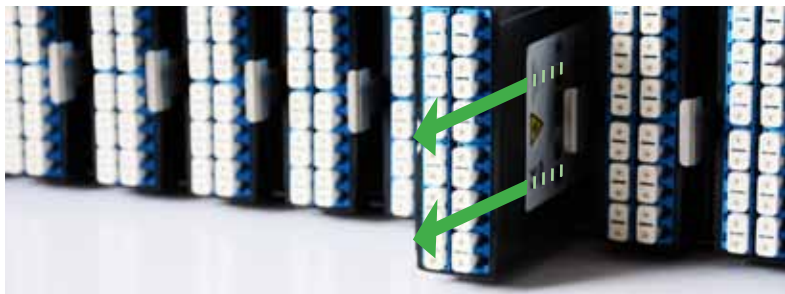
THE MX 2U PANEL





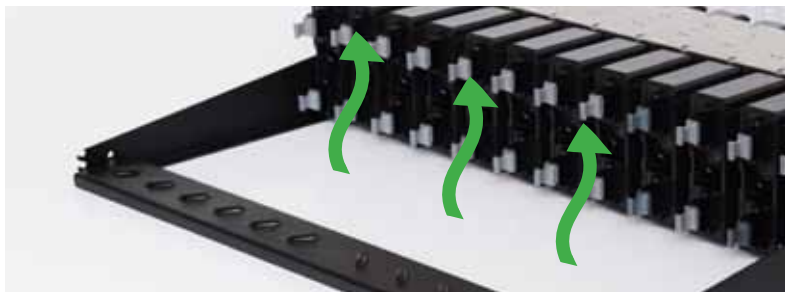
▶ **Increased Space For Labelling**

Offering total port designation across all 288 fibres.



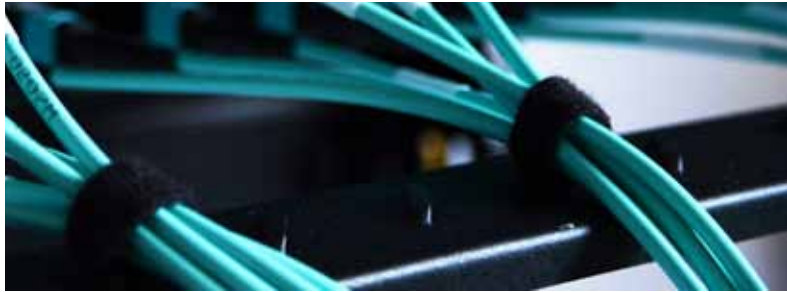
▶ **Minimise Disruption During MACs**

Avoid moving trays of multiple modules with single module extraction (change here is no s on modules).



▶ **Improved Airflow Through The Rack**

Enables improved cooling of equipment.



▶ **Integrated Strain Relief**

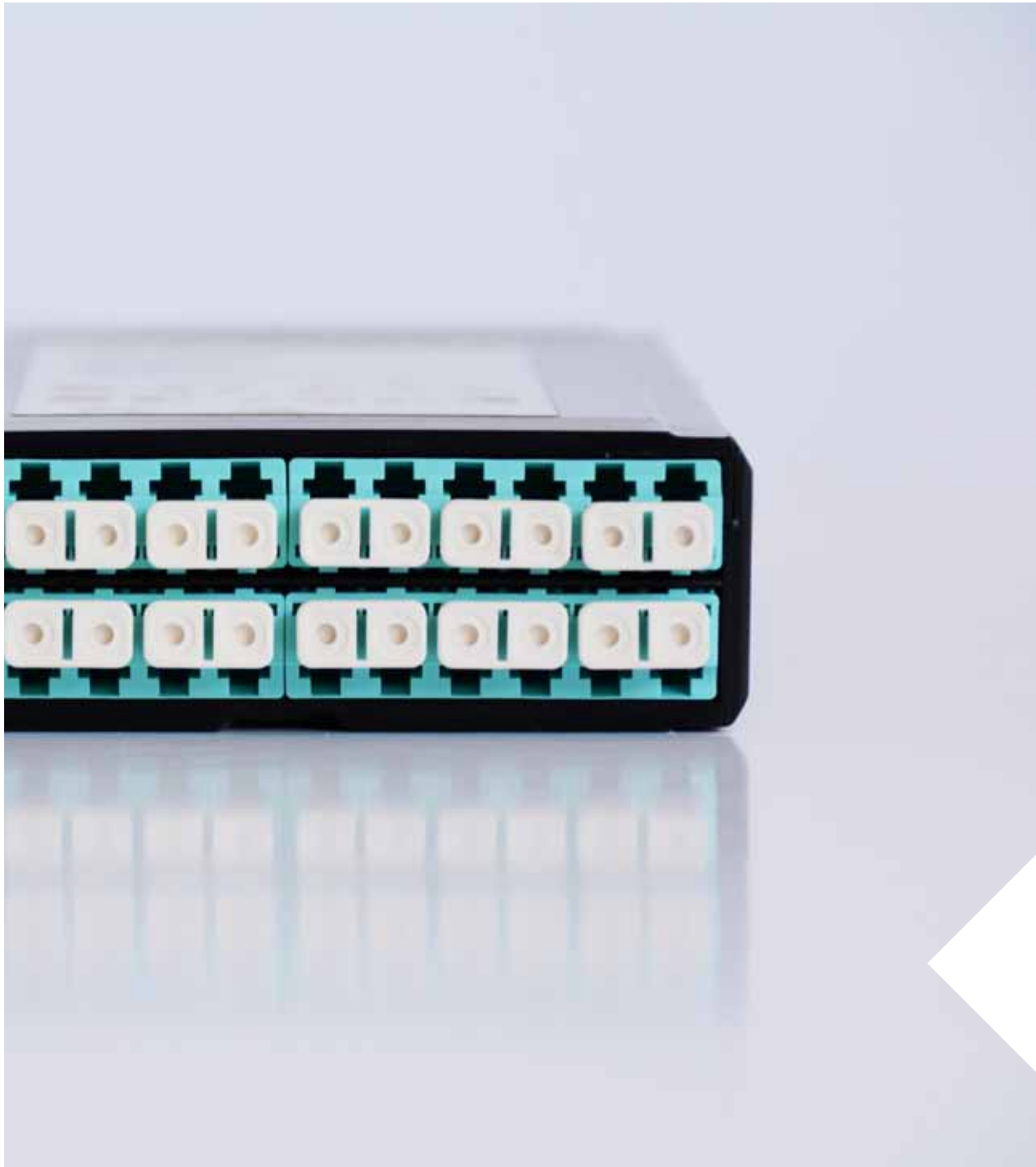
Multiple trunk cable tie off positions with cable ties included.



▶ **Maximised Port Spacing For Easy Patching**

With slim-line back to back adaptors and better spacing of modules.





MX MODULES



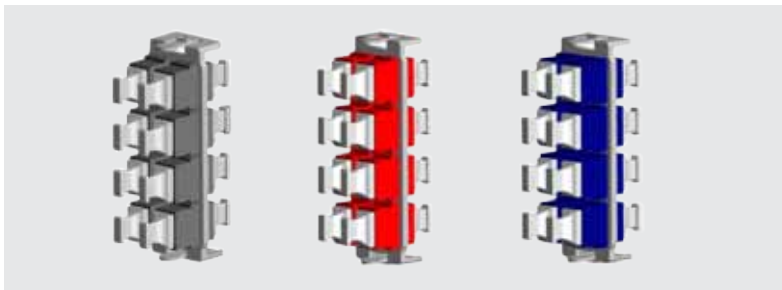
▶ Duplex Networking: 10G/25G

12 LC duplex ports (24 fibre) modular cassettes with 2 x rear MPO (MTP) 12 fibre cable ports. Low loss connectors and Corning Clearcurve® glass minimise insertion loss across the module.



▶ Base 8: 40G/56G/100G SR4

Each module breaks out 3 x SR4 channels into 12 duplex 10G/25G channels for patching using standard LC patch cords.



▶ MPO MTP Adaptor Modules

Create zonal distribution for 10G/25G networks or use within your 40G/100G network to connect patch cords to trunk cables. Each module holds 8 MPO (MTP) adaptors with various colour options to help designate different channels.



▶ **Mx(LC) Tap Modules: Front Port Monitoring**

Partially split out the Tx signal entering the cassette front LC ports and present these signals at clearly marked LC front ports. Vary the split from 50:50 to 90:10 depending on location of your cassettes.



▶ **Mx(MTP) Tap Modules: Trunk Cable Monitoring**

Partially split out the Tx signal entering the cassette rear MPO (MTP) ports and present these signals at a 2nd rear MPO (MTP) port rear of the cassette. Vary the split from 50:50 to 90:10.



Mx(LC + MTP) Tap Modules: Full Monitoring

Partially split out the Tx signal entering both the front and rear of the cassette. Present these signals at an MPO (MTP) rear port.

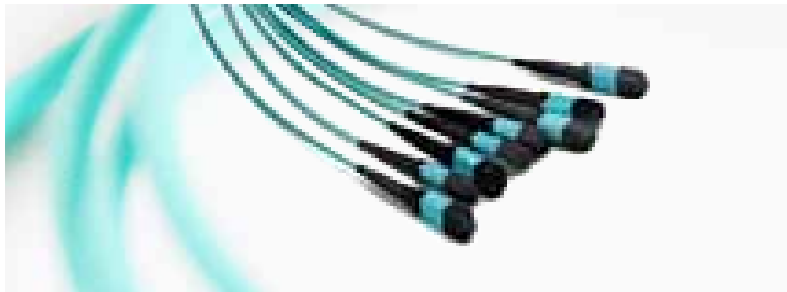


TRUNK CABLES



▶ **10G/25G From 12 To 144 Fibre**

M Series MTP® trunk cables form the backbone to the MX Series solution. With better bend radius and higher core counts, these trunks maximise cabling density.



▶ **Base 8: Up To 18 Channels Per Cable**

For SR4 40G, 56G, and 100G connectivity between MX MTP® adaptor coupler modules.



▶ **Base 20: 100G SR10 and LR10**

Utilising the MTP® 24 fibre ELITE® connector and high fibre count cable construction to minimise ports and cable space.



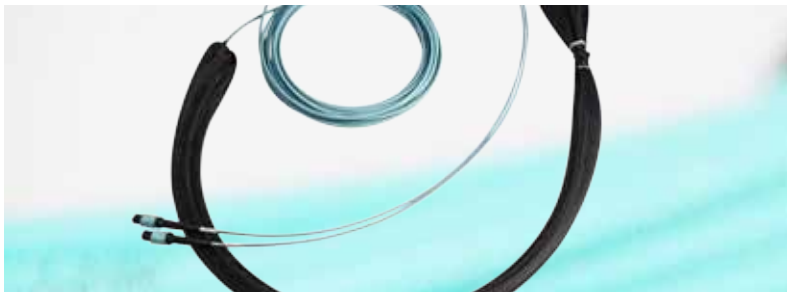
▶ **Micro Core Dry Loose Tube Cable**

This leading cable construction reduces bend radius, reduces cable weight and reduces cable volume in cable trays. Characteristics that are a prerequisite for a modern data centre network.



▶ **Corning Clearcurve® Glass**

All MX Series products use Corning Clearcurve® multimode and SMF28® singlemode glass cores. Simply put, these glass cores offer the best performance.



▶ **Pulling socks, customisation, even more options**

With more product options, network design and installation becomes simpler, quicker and more cost effective.



PATCH CORDS



▶ **M310 Patch Cords For 10G And 25G**

Low loss patch cords complete a high performance network. Options include standard duplex, unibody with smaller cable diameter, HD quick release tabs and full labelling.



▶ **M400 Patch Cords For 40G/100G SR4 And LR4**

For direct QSFP+ or QSFP28 connection, cross connects or for patching MPO (MTP) trunk cables via MX MPO (MTP) adaptor modules.



▶ **M1000 Patch Cords 100G SR10 And LR10**

For direct transceiver connections or cross connects, for patching MPO (MTP) trunk cables via MX MPO (MTP) adaptor modules.



BREAKOUTS



▶ **10G And 25G 12 Fibre Breakouts**

Improve port density in racks by using direct connect M Series breakout cables. Customise breakout tails to exactly fit your requirements.



▶ **Base 8: 40G And 100G SR4 / PLR4**

Breakout QSFP+ and QSFP28 transceivers to 10G channels. Benefit from the largest stock of cables in Europe.



▶ **20 Fibre 100G SR10 / PLR10**

Breakout CFP transceivers to enable breakout into 10G ports or transmitting over existing infrastructure.



CONTACT US

CALL
MAIL
WEB

+44 (0) 208 286 6529

sales@completeconnect.co.uk
techsupport@completeconnect.co.uk
accounts@completeconnect.co.uk

completeconnect.co.uk





Complete
Connect